

“ISOsystemPlus”

Installing and configuring the software
Local network version

«ISOsystemPlus» - structure

- Server database file server.isr
- Files of documents, documents' templates, filled records
- WEB-shell (for WEB-users)

Server PC



Local network

Admin's PC



- Software installed on the PC
- Admin rights – full access to the database

Internet/
intranet



“WEB”-users

- Unlimited No. of workstations
- Authorized (password) access for each user
- No need to install the program on PC

Local network



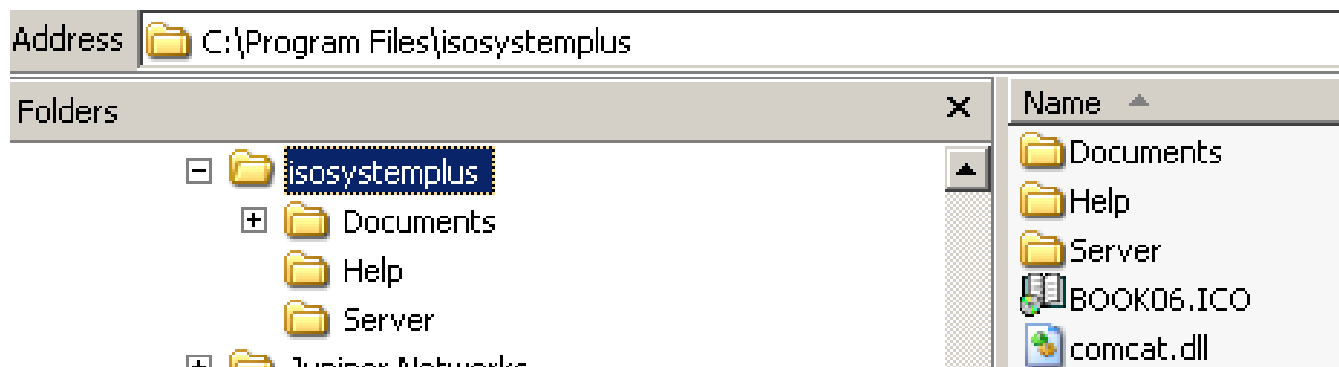
“Local network”-users

- Unlimited No. of workstations
- Authorized (password) access for each user
- Program to be installed on each PC

- Installation of the software and configuring of its local network version is conducted **in the same way** for demo-mode and for license mode
- At first the program should be installed on the PC – working station of the user that will be leading the process of implementation of the Management System (used to be the Management Representative or the person appointed by the Representative) and thus having “Admin” rights with regard to the database. This user will be available to edit/delete/add any record in the database
 - Hereinafter this user will be referred to as **user-Admin**

Installing the software: Coordination's working station

- File-installer of the software – setup.exe; included in the archive file isosystemplus.zip
- Run the setup.exe file on the user-Admin's PC
- Admin rights are mandated to install the program
- Default folder for installation - c:\Program Files\isosystemplus
 - Any application's folder can be defined during installation



- The following sub-folders are created in the ../isosystemplus/ program folder:
 - Documents – a folder for files of documents, templates of documents, filled records and correspondence
 - Server – a folder where the server database file server.isr is located
 - Help – built-in help files folder

- Server database file server.isr
- Files of documents, documents' templates, filled records
- WEB-shell (for WEB-users)

Server PC



Local network

Coordinator's PC



- Software installed on the PC
- Admin rights – full access to the database

Done

Internet/
intranet



“WEB”-users

- Unlimited No. of workstations
- Authorized (password) access for each user
- No need to install the program on PC
- Only “Documents” module yet

Local network



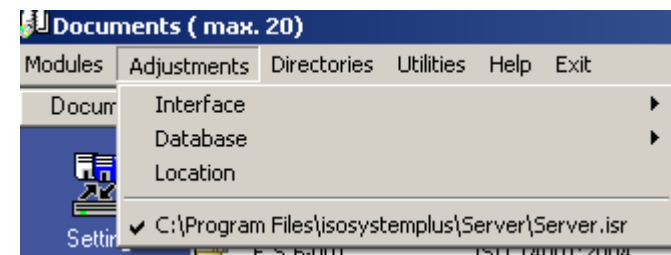
“Local network”-users

- Unlimited No. of workstations
- Authorized (password) access for each user
- Program to be installed on each PC
- All modules available

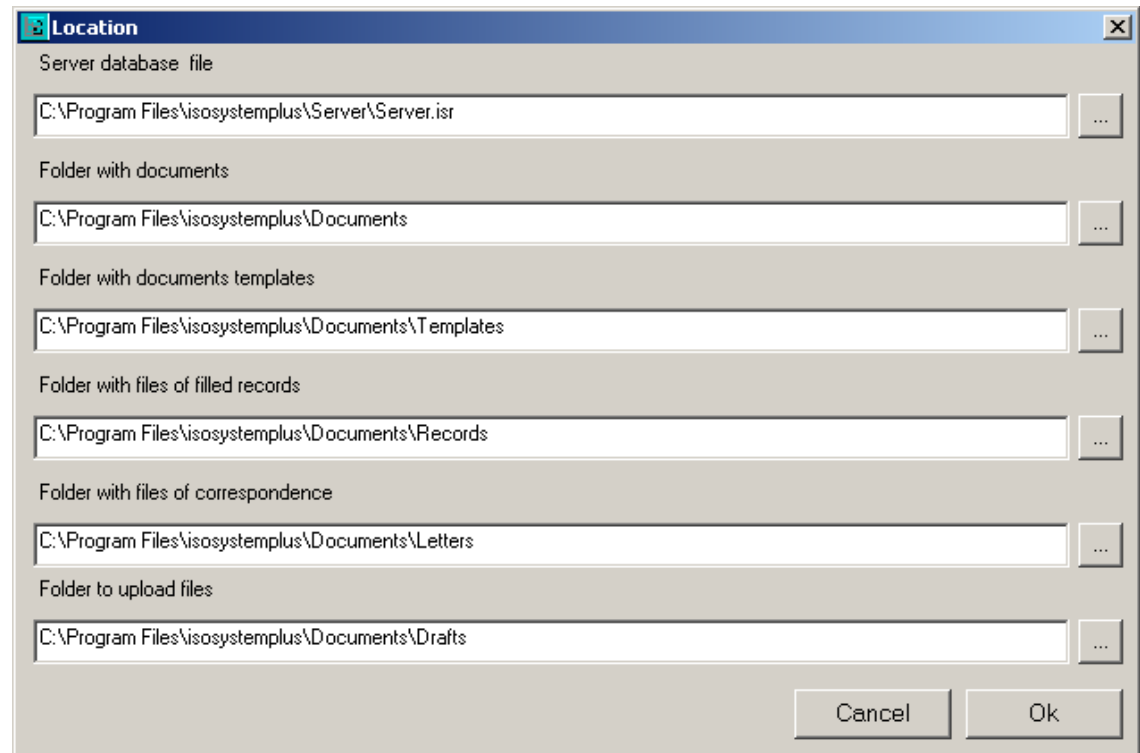
- If you have just started working with the application and are planning to test it on a single PC, you can stop the installation process now and proceed to the second presentation – “General functions” (can be downloaded on our site, page <http://www.isosystemplus.com/eng/Presentation.html>)
- If you have already got familiarized with the ISOsystemPlus basic features and wish to configure the local network version and keep testing the software in the network please proceed to the next slides

- To configure the local network version of the software several files should be saved on a server PC to provide users with the access to these files:
 - Server database file
 - Files of documents, templates of documents, filled records and correspondence
- We recommend to create “dedicated” ISOsystemPlus folder on a server PC using Copy-Paste technique in Windows Explorer
 - Let us assume that the server drive is g:
 - Please create the new folder g:\isosystemplus\ first
 - Go to the admin PC, copy all sub-folders in the folder c:\Program Files\isosystemplus\ (there are three of them - “Documents”, “Help”, “Server”) and paste them into the folder g:\isosystemplus\
- The next steps are as follows:
 - Saving server database file on the server PC
 - Defining paths to the folder with files of documents/templates/records
 - All these actions are performed at the PC – user-Admin’s workstation (the one on which the application was installed at the very beginning)

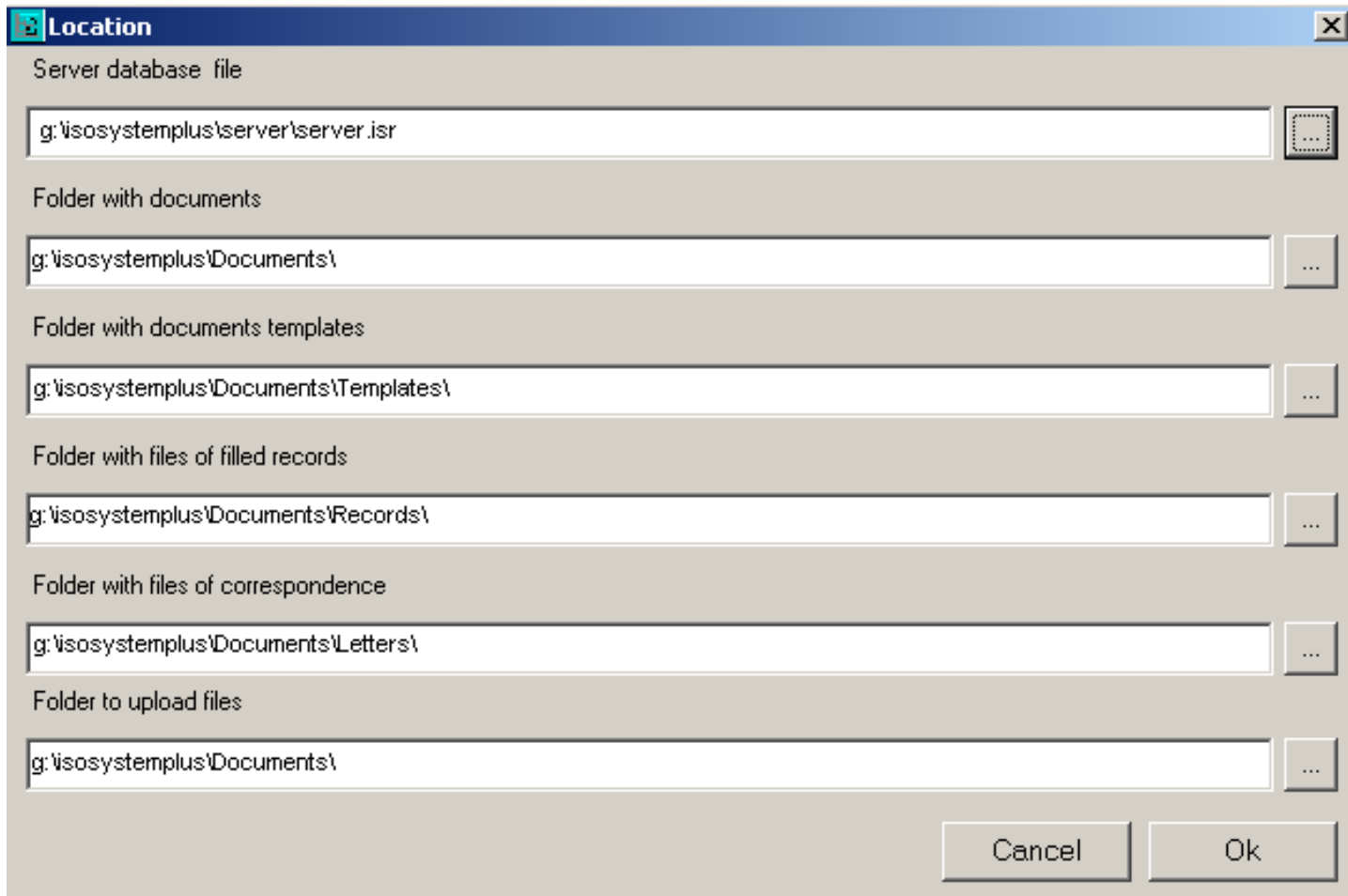
- Get back to the Admin's PC. Start up and enter the program
- "Adjustments" - as one can see at the moment you are linked to the sever database file which is located `c:\Program Files\isosystemplus\server\server.isr`



- The task is now to link to the sever PC, in the folder `g:\isosystemplus\server\server.isr` (you copied the file to the server PC on the previous step)
- "Adjustments" – "Location" - the form location looks as follows:



- You should re-browse the path to the server database file and to the folders with files of documents (templates, letters, records, etc.) using the paths to corresponding files/folders on the server PC – exactly as you did it while configuring the Admin’s PC
- Eventually the “Location” form should look as below:



The screenshot shows a window titled "Location" with a close button (X) in the top right corner. The window contains several input fields for configuring paths:

- Server database file: g:\isosystemplus\server\server.isr
- Folder with documents: g:\isosystemplus\Documents\
- Folder with documents templates: g:\isosystemplus\Documents\Templates\
- Folder with files of filled records: g:\isosystemplus\Documents\Records\
- Folder with files of correspondence: g:\isosystemplus\Documents\Letters\
- Folder to upload files: g:\isosystemplus\Documents\

At the bottom of the window, there are "Cancel" and "Ok" buttons.

- All users must have **full network access** (“Read and Edit”) to the folder where the server database file server.isr is located and to the file itself
 - If such access is not provided the message “Mistake 76. Your server database file is either located in the "Read Only" folder or damaged!” will appear
- The installation the application on Admin’s PC and configuring the server PC is completed. Now you can proceed to installing the application on users’ PCs

- Server database file server.isr
- Files of documents, documents' templates, filled records
- WEB-shell (for WEB-users)

Server PC



Done

Local network

Coordinator's PC



Done

- Software installed on the PC
- Admin rights – full access to the database

Internet/
intranet



“WEB”-users

- Unlimited No. of workstations
- Authorized (password) access for each user
- No need to install the program on PC
- Only “Documents” module yet

Local network



Local network



Local network

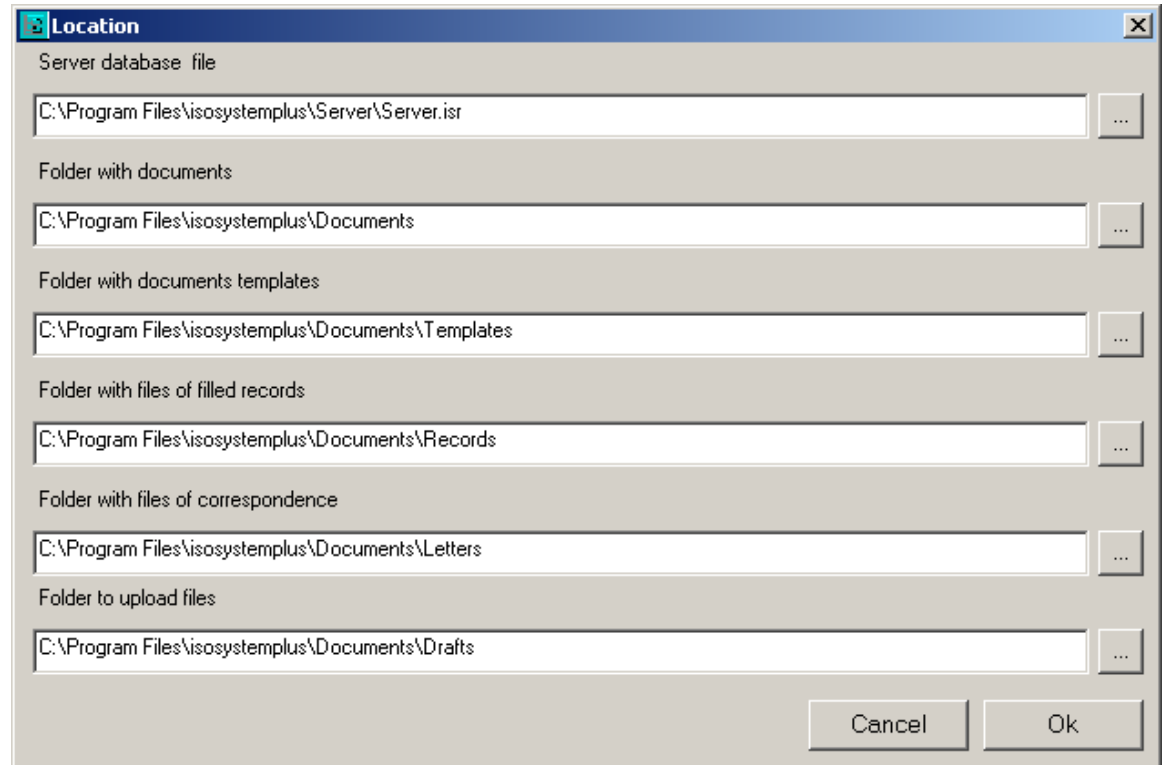


“Local network”-users

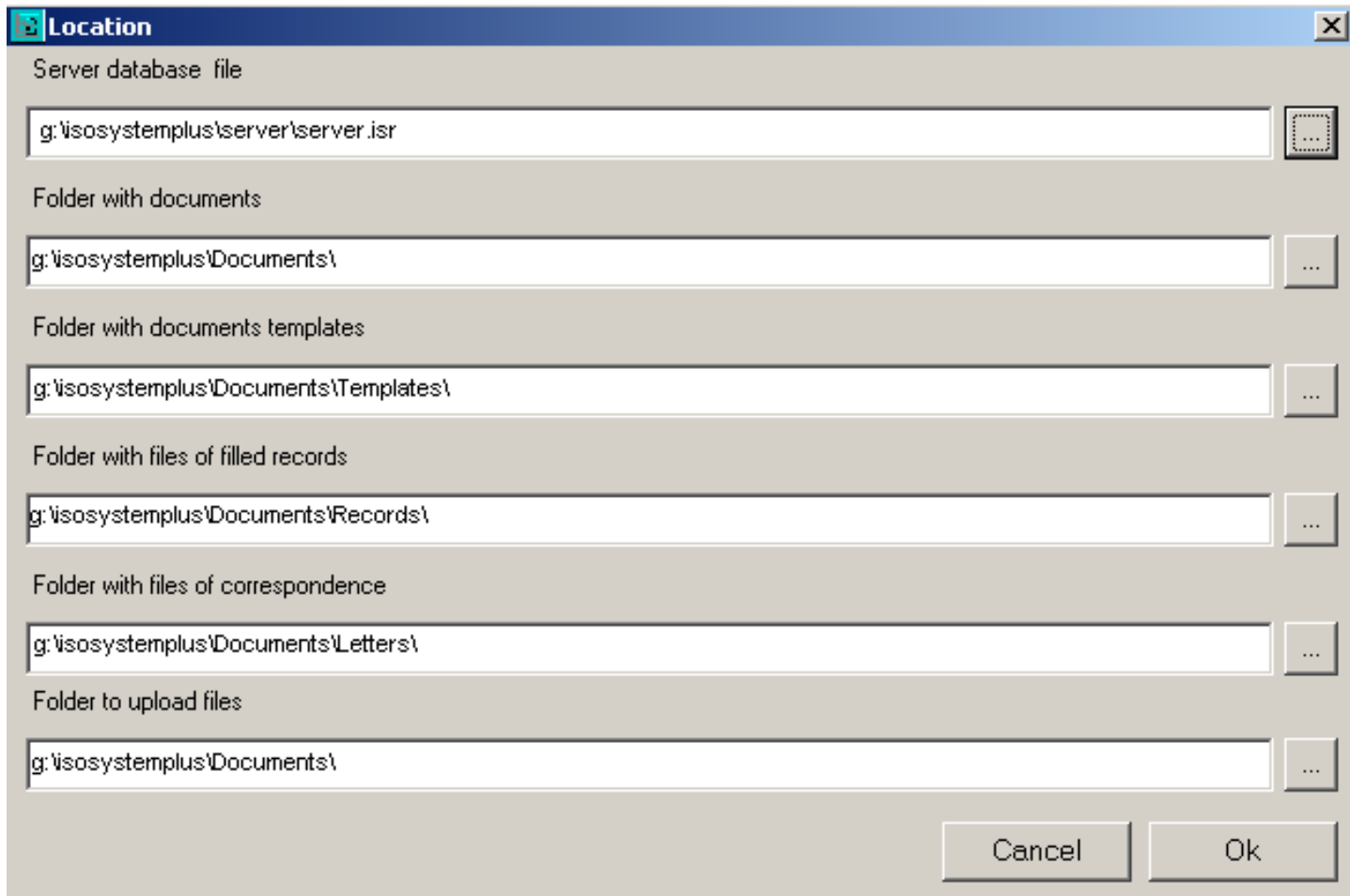
- Unlimited No. of workstations
- Authorized (password) access for each user
- Program to be installed on each PC
- All modules available

- The program should be installed at each user's workstation
- File-installer – setup.exe (the same which was used to install the application of Admin's PC)
- User-Admin runs the application on a user's PC
 - All actions are exactly the same as for the program installation on Admin's PC
- User-Admin enters ISOsystemPlus in demo-mode

- Go to "Adjustments"
 - "Location" mode
 - the form looks as follows:



- You should re-browse the path to the server database file and to the folders with files of documents (templates, letters, records, etc.) using the paths to corresponding files/folders on the server PC
- So eventually the “Location” form should look as below:



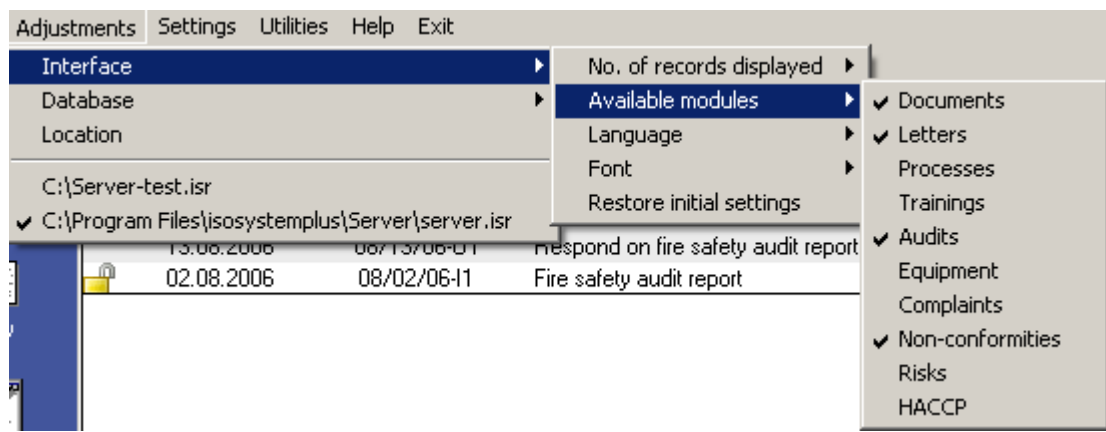
The screenshot shows a window titled "Location" with a close button (X) in the top right corner. The window contains several text input fields, each with a label and a corresponding button to the right:

- Server database file:** The text box contains "g:\isosystemplus\server\server.isr" and has a button with a dotted square icon.
- Folder with documents:** The text box contains "g:\isosystemplus\Documents\" and has a button with three dots.
- Folder with documents templates:** The text box contains "g:\isosystemplus\Documents\Templates\" and has a button with three dots.
- Folder with files of filled records:** The text box contains "g:\isosystemplus\Documents\Records\" and has a button with three dots.
- Folder with files of correspondence:** The text box contains "g:\isosystemplus\Documents\Letters\" and has a button with three dots.
- Folder to upload files:** The text box contains "g:\isosystemplus\Documents\" and has a button with three dots.

At the bottom of the window, there are two buttons: "Cancel" and "Ok".

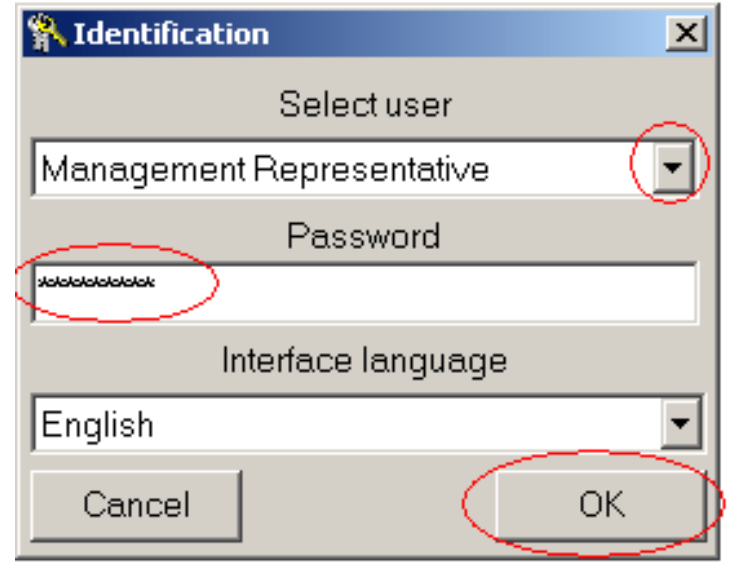
Installing the software: user's working station

- User-Admin can also select (“Adjustments” – “Available modules”) those modules which will be available at this user's working station



- For the case presented on the picture to the right only 4 modules will be available for the user

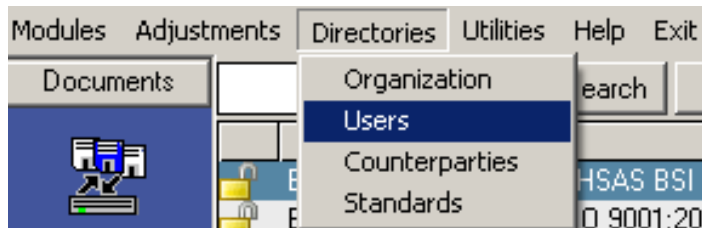
- Admin exits the application
- After the next start the application opens up in the user's interface
- User starts up the application, selects his/her name from the list of users, enters password, presses OK and enters the application



1
2
3

- Users' names and passwords are defined by User-Admin in “Directories” mode

- List of users is available on the user-Admin workstation in the “Directories” – “Users” – “Users” form and can be edited by user-Admin



Users (max. 20)

Departments | Position | Groups | Users | Authorization | Total delayed actions: | Monitoring

Search Search Enter searched symbol(s) and press Space key

Nu.	Class	Department	Position	User	Password	E - mail
14						
1	Admin	Quality	Manager	Management Representative	1	mr@iso.doc
2	User	Board	Director	General Manager	4	gm@iso.com
3	User	Finance	Manager	Finance Manager	5	fm@iso.com
4	User	HR	Manager	HR Manager	20	hr@iso.com
5	User	Marketing	Manager	Marketing Manager	12	mm@iso.com
6	User	Production	Supervisor	Filling line supervisor	14	st@iso.com
7	User	Production	Manager	Production Manager	3	pm@iso.com
8	User	Purchasing	Manager	Purchasing Manager	13	nm@iso.com

Installing the software: completed

- Server database file server.isr
- Files of documents, documents' templates, filled records
- WEB-shell (for WEB-users)

Server PC



Done

Local network

Coordinator's PC



Done

- Software installed on the PC
- Admin rights – full access to the database

Internet/
intranet



"WEB"-users

- Unlimited No. of workstations
- Authorized (password) access for each user
- No need to install the program on PC
- Only "Documents" module yet

Local network

Local network

Local network



"Local network"-users

- Unlimited No. of workstations
- Authorized (password) access for each user
- Program to be installed on each PC
- All modules available

Done